

**FOR LEASE: RETAIL STORE, HIGH VISIBILITY**

LOCATED IN DOWNTOWN SANTA MONICA, CLOSE TO PROMENADE &amp; SM BEACH

**723 BROADWAY**

Santa Monica, CA 90401

~ 1,000 SF

Signalized N/W corner **LINCOLN & Broadway**

Down-town Santa Monica

High TRAFFIC High VISIBILITY

**POTENTIAL USES:****Built out 5 treatment rooms each with sink + Office and waiting area****SPACE DESCRIPTION:**~ **1,000 Sq Ft**, Hi Ceiling, High **Street Visibility**, Across from Vons, Visible a block away!**LEASE RATE:****\$4,900 / Mo. NNN****\*\*\*\*[CLICK HERE FOR VIRTUAL TOUR](#)\*\*\*\*****CONTACT:**Avi Hakim, Manager **(323) 655-1212** (310) 508-1008 [avi@wilshiremanagement.com](mailto:avi@wilshiremanagement.com)**[www.wilshiremanagement.com](http://www.wilshiremanagement.com)****BROKERS WELCOME : FULL COMMISSION TO LEASING AGENT**

See more info below pages





NW Corner of Lincoln & Broadway



**Broadway is one the main gateways to downtown Santa Monica, SM Promenade & SM Place**

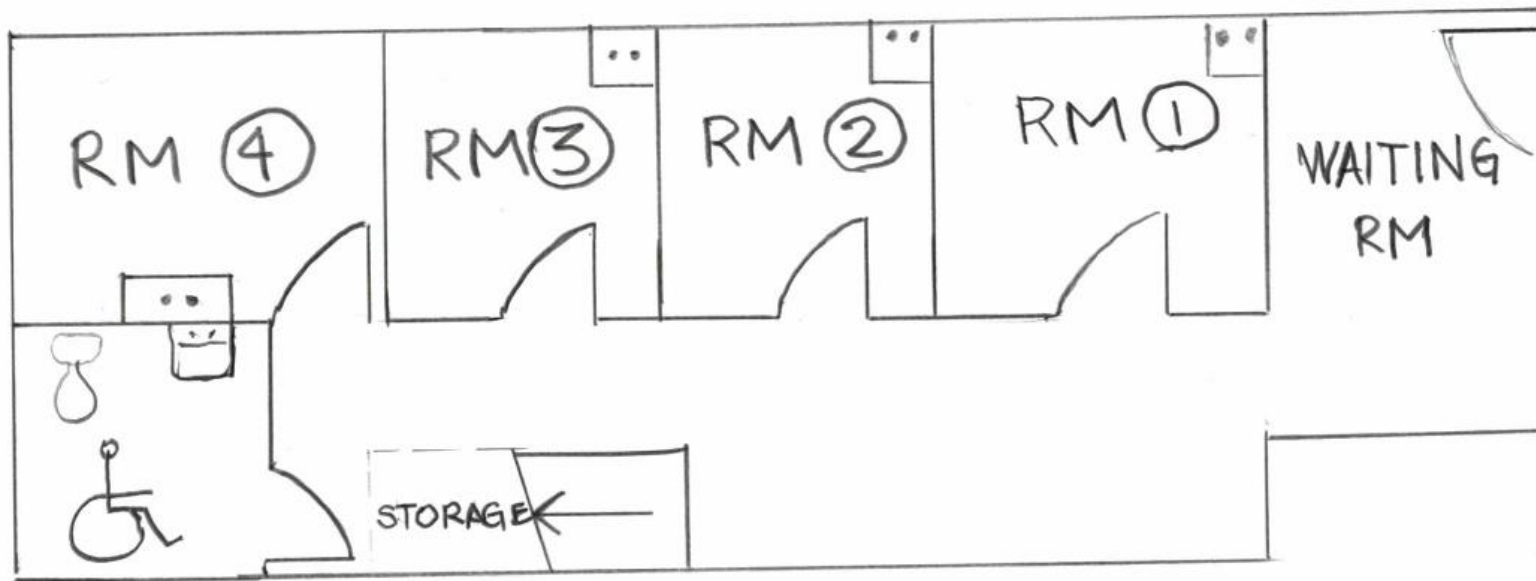
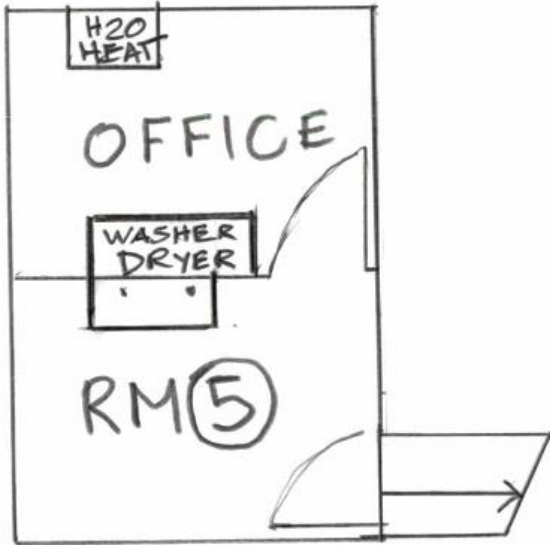
**Space has huge exposure on Lincoln, Broadway and from the Vons Parking across the street  
Broadway has a bike Path; Santa Monica City Fiber Band Network available on Broadway**

Space Plan

723 BROADWAY

NOT TO SCALE

~ 1,000 SF





**This corner is a major entry gateway to Downtown Santa Monica being across the Street from Vons Parking lot, it provides very high visibility to the Space along Broadway**

**Across from Vons, Swingers, Sweet fin, Chase Bank, Fresh Brothers, Jersey Mikes, Pono BurgerBodega Bar Club, Bay Cities Italian Market**

**Half Block from Phoenix Salons, Santa Monica Homeopathic Pharmacy**

**Immediately next to Clearly Yoga, Anama Yoga, Training Mate Gym**

The information contained herein has been gathered from sources that are believed to be reliable and is the work protocol of Wilshire Management. Do not duplicate or modify without prior written consent. While we do not doubt its accuracy, we have not verified it and make no warranty, guarantee or representations about it. It is your responsibility to independently confirm its accuracy.